

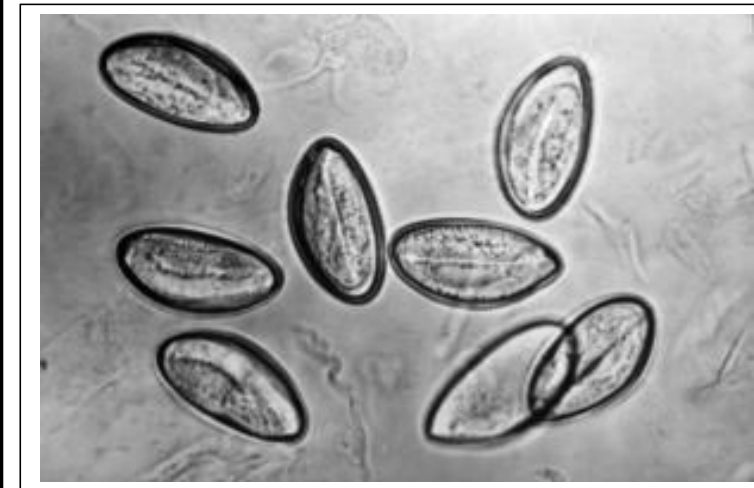
Micro-Parasitology

(1) *Ascaris lumbricoides*



•Thick albumin coat (flower-like) covering the egg

(2) *Enterobius Vermicularis*



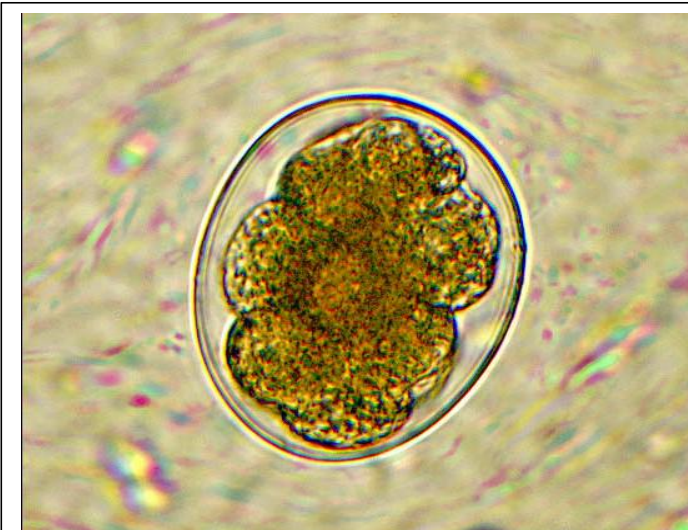
(3) *Trichuris Trichiuria*



(4) *Toxocara*



(5) *Ancylostoma duodenale*



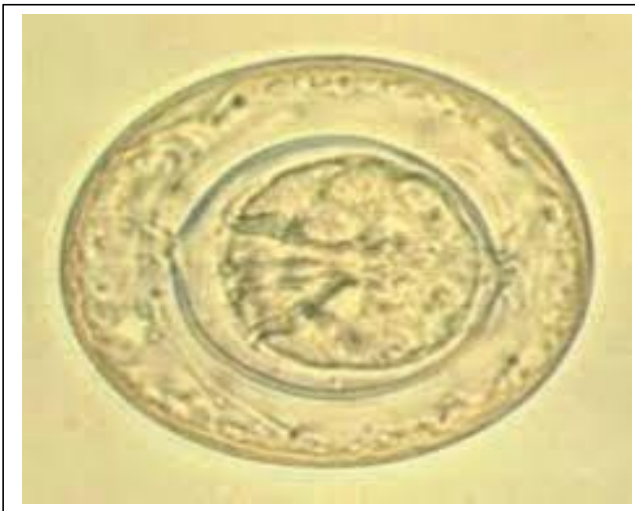
(6) *Fasciola hepatica*



(7) *Taenia Spp.*



(8) *Hymenolepis nana*



(9) *S.mansoni*



(10) *S.haematobium*



(11) *S.japonicum*

